

Building Resilience to Climate Change in Ethiopia: Exploring Options for Action



About

Collaborative research project between Development Economics Group (DERG) of Copenhagen University and Policy Studies Institute (PSI), Ethiopia

Project Life: Runs for five years, starting April 1, 2019 – ending March 31, 2024

Source of Funding: Ministry of Foreign Affairs of Denmark

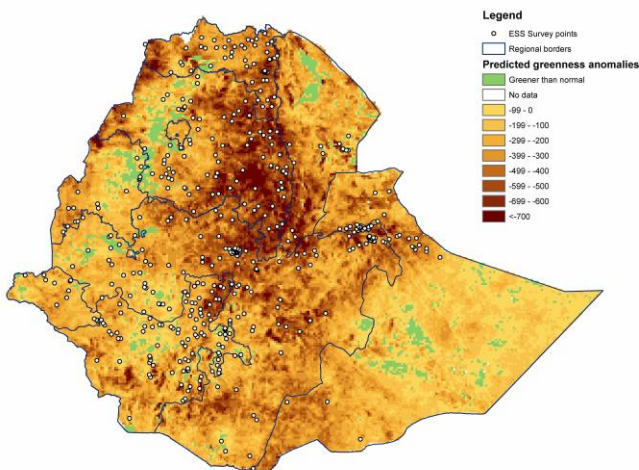
Overall aim:

To identify, evaluate and compare drivers of resilience to climate change in rural Ethiopia by examining actions taken at household and district/village level:

- Using existing survey data together with satellite measures of drought exposure and vegetation resilience
- Conducting a particularly targeted survey on resilience enhancing actions
- Analyzing the impacts of large scale interventions including the Ethiopian Productive Safety Net Program (PSNP) and Sustainable Land Management Practices (SLPM)

The project has three long term objectives:

1. Increasing existing knowledge about the drivers of resilience in Ethiopia;
2. Improved policies relating to resilience and hence improvement in the living conditions of smallholder farmers in Ethiopia;
3. Mutual learning and enhanced local human and institutional capacity to analyze the issue of resilience;



How to define resilience?

IPCC (2012) – and others:

“*Resilience* is the ability of a system and its component parts to anticipate, absorb, accommodate or recover from the effects of a hazardous event in a timely and efficient manner”

How to identify resilience in practice?

- Analysing existing survey data in combination with satellite data on weather and climate
- Example of drought measure and survey points- see map on the left

Work packages:

- WP1: Identifying Resilience at Different Levels
- WP2: Identifying Resilience enhancing Local Innovative Actions
- WP3: Assessing the Impact of Local Innovative Actions identified in WP2
- WP4: Assessing the Impact of the Productive Safety Net Program on Household Resilience
- WP5: Evaluating the Effectiveness of Sustainable Land Management Practices (SLMP)